

## SKAGWAY VISITOR ARRIVAL STATISTICS • 1983-2007

YEAR	CRUISE	AMH may-sep	HIGHWAY	WP&YR	fwx	AIR	OTHER	TOTAL
1983	48,066	25,288	72,384	NA	15,000	3,500	NA	164,238
1984	54,907	25,196	79,215	NA	15,000	3,750	NA	178,068
1985	77,623	31,522	89,542	NA	15,000	4,000	NA	217,687
1986	100,695	30,981	91,908	NA	15,000	4,250	NA	242,834
1987	119,279	30,905	70,993	NA	15,498	4,953	NA	241,628
1988	115,505	31,481	74,614	NA	15,123	5,957	NA	242,680
1989	112,692	29,997	63,789	15,972	14,562	7,233	NA	244,245
1990	136,512	33,234	63,237	16,072	17,767	4,799	NA	271,621
1991	141,284	33,630	64,610	19,069	19,157	4,853	1,163	283,766
1992	145,973	37,216	79,946	17,809	18,852	7,947	2,000	309,743
1993	192,549	33,650	80,709	16,313	13,220	10,092	3,000	349,533
1994	204,387	34,270	81,172	15,865	13,000	10,000	3,000	361,694
1995	256,788	33,961	87,977	15,521	13,000	17,000	4,100	428,347
1996	299,651	35,760	86,536	20,871	14,782	20,721	4,000	482,321
1997	438,305	27,659	91,849	14,416	0	11,466	7,173	590,868
1998	494,961	31,324	100,784	20,432	2,671	20,679	7,923	678,774
1999	525,507	31,467	92,291	20,422	0	15,963	4,767	690,417
2000	565,639	30,732	94,925	19,231	0	15,626	8,362	734,515
2001	599,520	23,232	82,629	20,674	0	7,479	10,205	743,739
2002	611,638	26,224	80,421	14,361	0	5,641	12,154	750,439
2003	639,742	23,814	74,750	13,065	0	6,340	23,724	781,435
2004	722,095	23,171	77,837	13,187	0	6,046	15,069	857,405
2005	772,332	21,264	71,387	17,071	0	6,382	14,343	902,779
2006	755,314	20,581	61,870	17,826	0	5,687	13,558	874,836
2007	820,744	17,738	68,855	11,514	0	4,890	5,069	928,810
2006-2007	8.66%	-13.81%	11.29%	-35.41%		-14.01%	-62.61%	6.17%

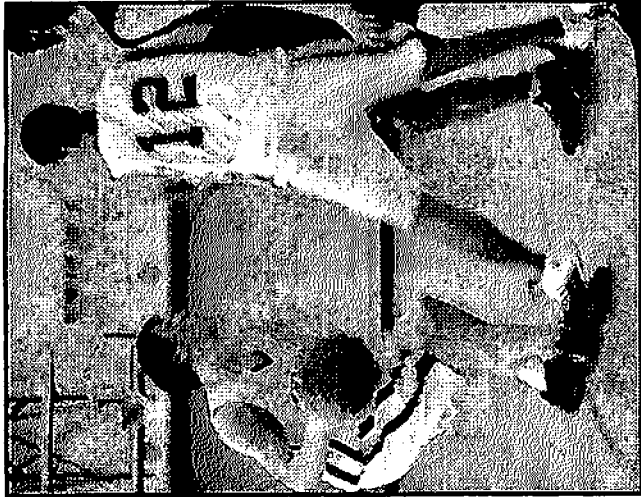
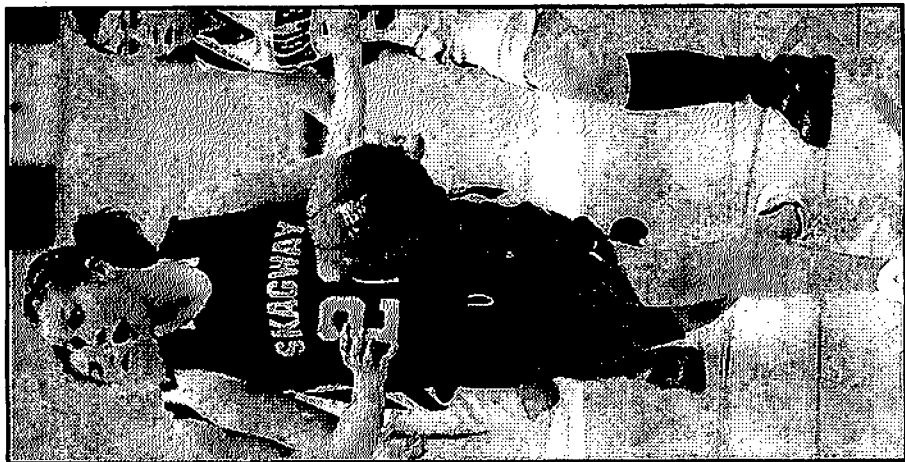
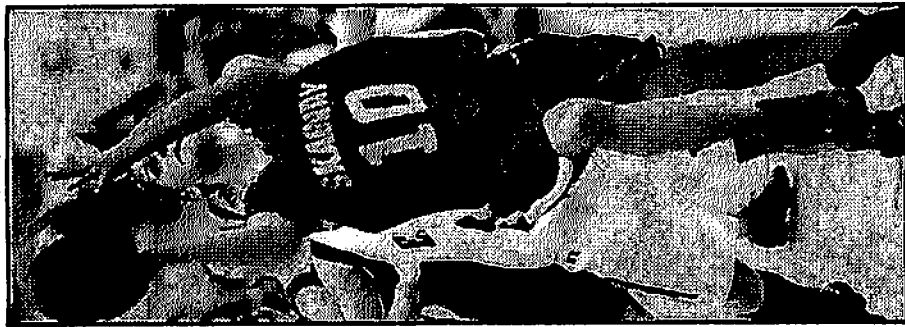
• 1983-1997 and 2002-2007 totals are for the months May through September.

• 1998-2001 totals are for the months April through September.

• The WP&YR did not operate from 1983-1988; figures supplied are arrivals only from southbound trains from Fraser or (beginning in 2007) Carcross.

• The "Fairweather" listing is for a Holland America day boat that operated between Juneau and Skagway that stopped in 1998. The new fast ferry has taken its name.

• Privately operated Haines-Skagway shuttle boat arrivals are reflected in the "Other" totals after 1991. The 2006-07 totals includes cruise passengers from ships docked in Haines that came over to Skagway on these shuttles.



**SKAGWAY SHOWSTOPPERS** - From left, Jake Henriksen gets airborne on a drive, Kaylie O'Daniel drives hard for two, Jessle Ellis eyes the bucket after outrunning two Yakutat players, and Mickey Wilson takes advantage of a Bryce Jones screen in his big game. Boys shots by Lara Labesky, girls shots by Tom Miller, KDN

REGIONAL C: Young girls team learn valuable lesson before win OT thriller to put them in big game